

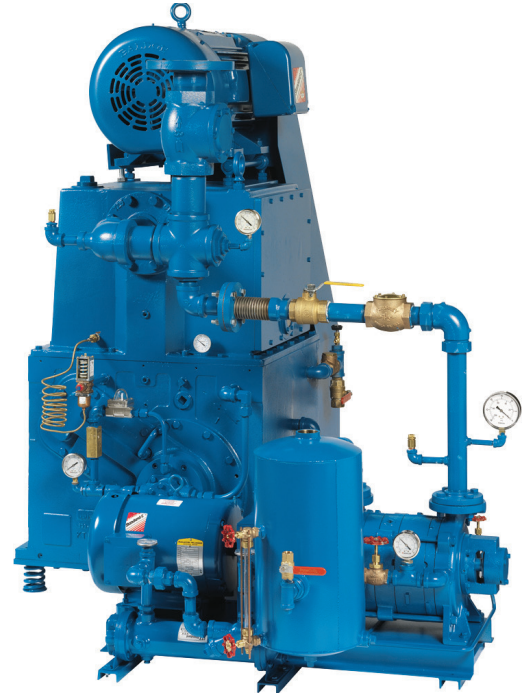
Vapor Handling Systems

Models: KT-150 / KLRC-75 KT-300 / KLRC-75
 KT-500 / KLRC-75 KT-850 / KLRC-125

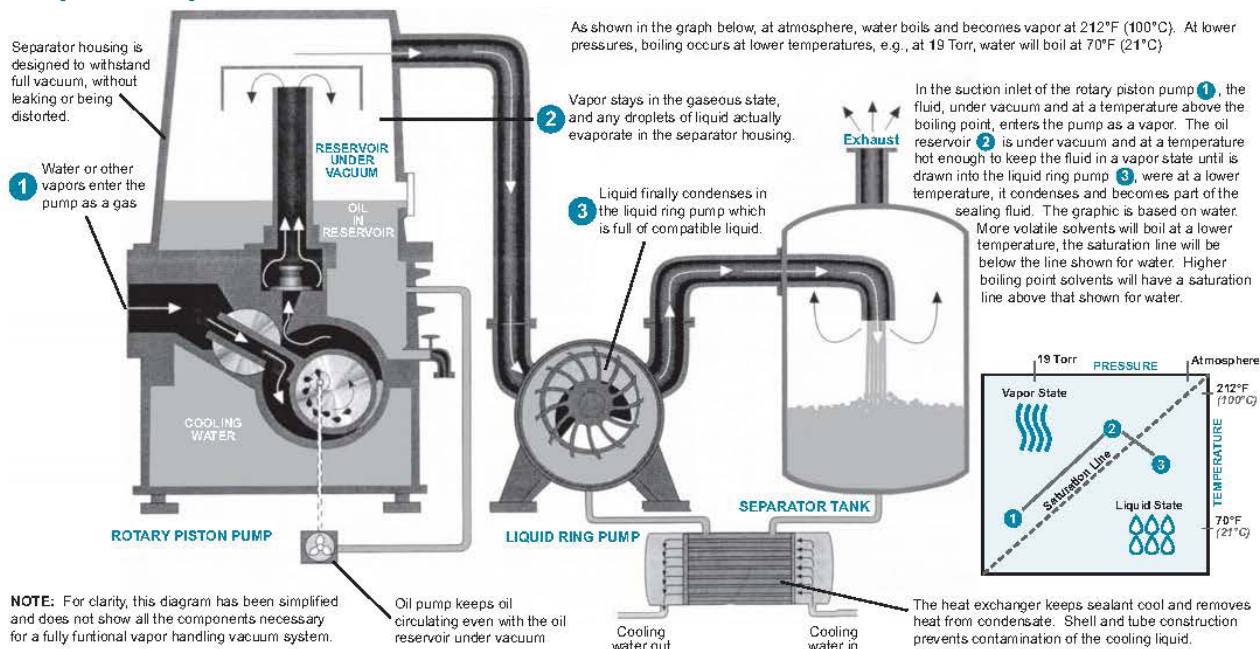
Kinney Vapor Handling Vacuum Systems are the cost-effective solution to vapor handling in any wet process requiring high vacuums. Vapor Handling Systems prevent vapors from condensing in the rotary piston pump. The oil reservoir of the KT pump is designed to withstand the pressure differential of continuous vacuum, and the oil pump assures a positive flow of oil, even when the reservoir is under vacuum.

Features

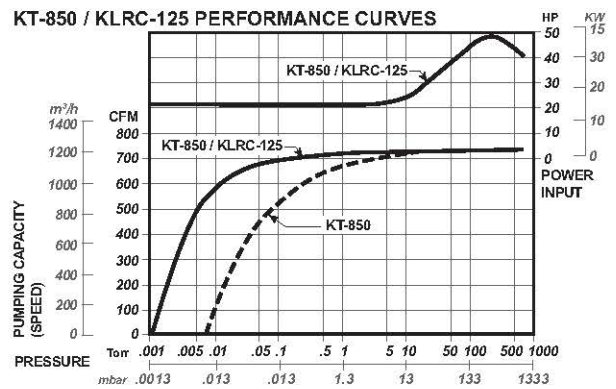
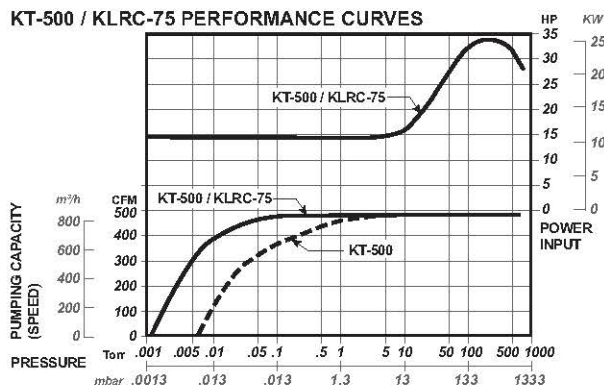
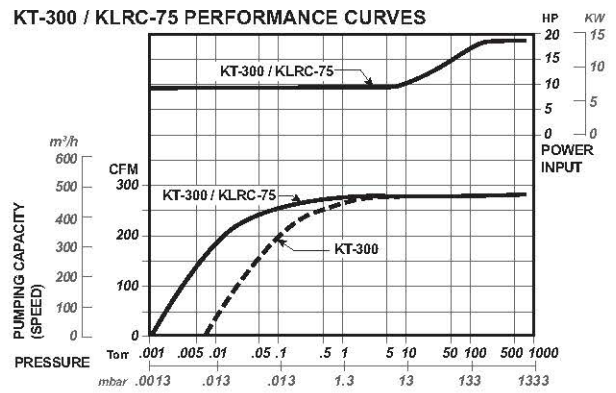
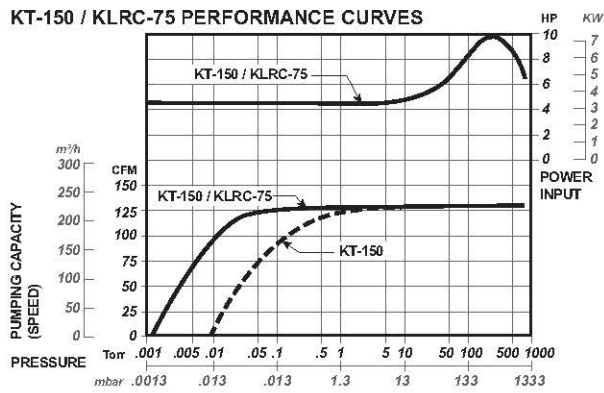
- More pumping speed at low pressure
- Maintain lower pressures on wet processes
- Eliminate loss of performance due to contaminated oil
- Greatly reduce oil consumption and need for oil changing
- Improve process quality and reliability - no downtime
- Keeps contaminants in the vapor state, thereby reducing corrosion on metal surfaces
- Provide savings both on initial cost and operating expense as compared to once through oil-lubricated vacuum pumps



Principle of Operation



Typical Pumping Speed Curves



Specifications

| MODEL | | KT-150 / KLRC-75 | | KT-300 / KLRC-75 | | KT-500 / KLRC-75 | | KT-850 / KLRC-125 | |
|--------------------------------------|-----------|------------------|-----------|------------------|-----------|------------------|-----------|-------------------|-----------|
| | | KT-150 | KLRC-75 | KT-300 | KLRC-75 | KT-500 | KLRC-75 | KT-850 | KLRC-125 |
| Rotational Speed RPM | RPM | 1055 | 1750 | 875 | 1750 | 765 | 1750 | 615 | 1750 |
| Recommended Motor | HP / kW | 7.5 / 5.6 | 5 / 3.75 | 15 / 11.25 | 5 / 3.75 | 30 / 22.5 | 5 / 3.75 | 40 / 30 | 10 / 7.5 |
| Water Flow Rate @ 60°F (16°C) | GPM / L/M | 1 / 4 | 10 / 38 | 2 / 8 | 10 / 38 | 3 / 11 | 10 / 38 | 5 / 19 | 14 / 53 |
| Net Weight | LBS / kg | 775 / 352 | 260 / 118 | 1475 / 669 | 250 / 118 | 2625 / 1191 | 285 / 130 | 4175 / 1897 | 485 / 220 |
| Drive | Type | V-Belt | Dired | V-Belt | Direct | V-Belt | Dired | V-Belt | Direct |
| Inlet Water Connection | NPT | 1/4" | 1/2" | 3/8" | 1/2" | 3/8" | 1/2" | 3/8" | 3/4" |
| Outlet Water Connection | NPT | 3/8" | — | 1/2" | — | 1/2" | — | 1/2" | — |
| KT Inlet/KLRC Discharge Flange Conn. | ANSI | 3" | 1 1/2" | 4" | 1 1/2" | 6" | 1 1/2" | 8" | 1 1/2" |
| Interstage Blowoff Valve Connection | NPT | 2" | | 3" | | 3" | | 4" | |

CONTACT US

For more information, contact your Regional Sales Manager or call us at:

1-800-825-6937

Your Local Sales Professional: